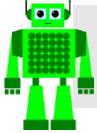


Capital Letters, Full Stops, Question Marks and Exclamation Marks



A sentence must begin with a capital letter and it should end with a full stop, question mark or exclamation mark.

- 1) Choose a full stop, question mark or exclamation mark to end each sentence correctly.

What time does the film begin _____

How amazing it must be to live in a palace _____

What a delicious bowl of pasta _____

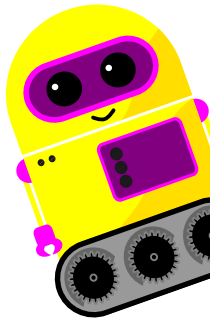
Vishal visits his grandparents after school every Monday _____

The bees noisily buzzed around their hive _____

Tabitha has lost her new trainers _____

I went shopping with my mum yesterday _____

When does the next train to Leeds depart _____



- 2) Re-write the sentences below with capital letters and punctuation in the correct places.

there is a football match tomorrow i hope to go and watch it

would you like to come to my house for dinner what is your favourite food

did you see that monkey how amazing it must be to swing through the trees

it was busy at the bus station we waited over an hour for a bus

